

Anti-MyoD1/Myod Rabbit Monoclonal Antibody
Catalog # ABO13762**Specification**

Anti-MyoD1/Myod Rabbit Monoclonal Antibody - Product Information

Application	WB, IP, FC
Primary Accession	P15172
Host	Rabbit
Isotype	Rabbit IgG
Reactivity	Human
Clonality	Monoclonal
Format	Liquid

Description

Anti-MyoD1/Myod Rabbit Monoclonal Antibody . Tested in WB, IP, Flow Cytometry applications. This antibody reacts with Human.

Anti-MyoD1/Myod Rabbit Monoclonal Antibody - Additional Information

Gene ID 4654

Other Names

Myoblast determination protein 1, Class C basic helix-loop-helix protein 1, bHLHc1, Myogenic factor 3, Myf-3, MYOD1, BHLHC1, MYF3, MYOD

Calculated MW

34501 MW KDa

Application Details

WB 1:500-1:2000
IP 1:50
FC 1:50

Subcellular Localization

Nucleus.

Contents

Rabbit IgG in phosphate buffered saline, pH 7.4, 150mM NaCl, 0.02% sodium azide and 50% glycerol, 0.4-0.5mg/ml BSA.

Immunogen

A synthesized peptide derived from human MyoD1

Purification

Affinity-chromatography

Storage

Store at -20°C for one year. For short term storage and frequent use, store at 4°C for up to one month. Avoid repeated freeze-thaw cycles.

Anti-MyoD1/Myod Rabbit Monoclonal Antibody - Protein Information

Name MYOD1

Synonyms BHLHC1, MYF3, MYOD

Function

Acts as a transcriptional activator that promotes transcription of muscle-specific target genes and plays a role in muscle differentiation. Together with MYF5 and MYOG, co-occupies muscle-specific gene promoter core region during myogenesis. Induces fibroblasts to differentiate into myoblasts. Interacts with and is inhibited by the twist protein. This interaction probably involves the basic domains of both proteins (By similarity).

Cellular Location

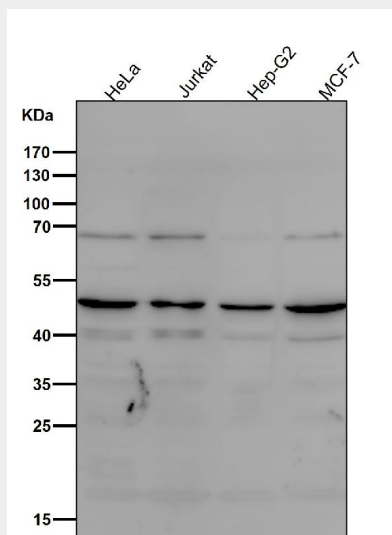
Nucleus.

Anti-MyoD1/Myod Rabbit Monoclonal Antibody - Protocols

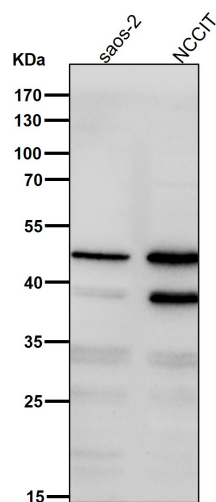
Provided below are standard protocols that you may find useful for product applications.

- [Western Blot](#)
- [Blocking Peptides](#)
- [Dot Blot](#)
- [Immunohistochemistry](#)
- [Immunofluorescence](#)
- [Immunoprecipitation](#)
- [Flow Cytometry](#)
- [Cell Culture](#)

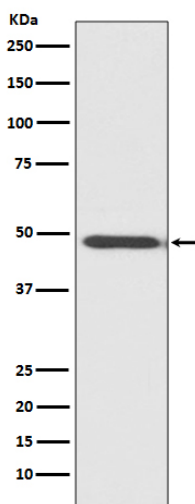
Anti-MyoD1/Myod Rabbit Monoclonal Antibody - Images



All lanes use the Antibody at 1:1K dilution for 1 hour at room temperature.



All lanes use the Antibody at 1:1K dilution for 1 hour at room temperature.



Western blot analysis of MyoD1 expression in HeLa cell lysate.